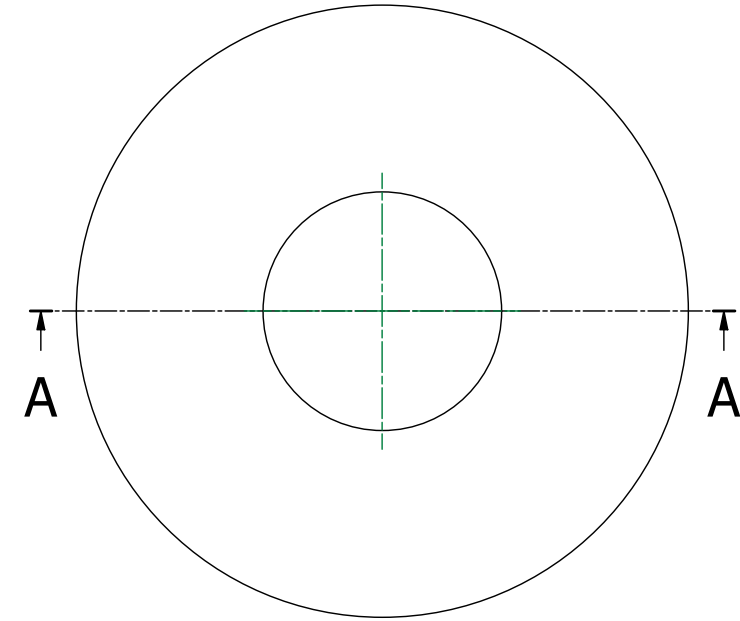
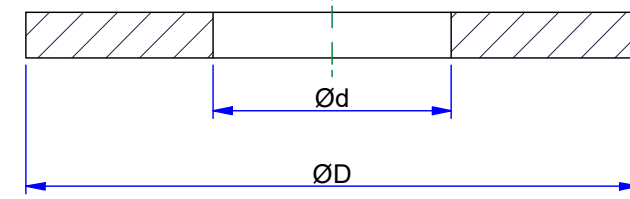


A-A (3 : 1)



Description	Code	Masse/Weight Kg/p	Ød mm	ØD mm	Ep./Th. mm
Rondelle plate large Ø6 A4/316	529024	0,005	6,4	18	1,6
Rondelle plate large Ø8 A4/316	529020	0,007	8,4	24	2
Rondelle plate large Ø10 A4/316	529034	0,012	10,5	30	2,5
Rondelle plate large Ø12 A4/316	529023	0,017	13	37	3

A4/316 : Stainless steel according to NF EN 10088-2 (316L) - Bolt

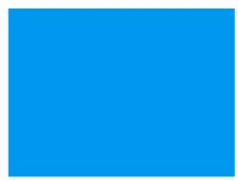
A4/316 : Acier inoxydable suivant NF EN 10088-2 (316L) - Boulonnerie

RONDELLE PLATE LARGE A4/316
FLAT WASHER A4/316



ASSISTANCE TECHNIQUE
+33 (0)1 55 95 92 17
pole.technique@niedax.fr

NIEDAX
France



FT02142



www.niedaxfrance.fr